

The Arts: Visual Arts - Satisfactory - Years 3 and 4

Portfolio summary

This portfolio of student work shows that the student can identify and describe visual conventions of an artwork (item 1) and draw and plan their own artworks (items 2 and 3). They use visual conventions, processes and techniques to create several sculptures (items 4, 5 and 6).

Clay objects: Connection to our coast

Sample summary

Students considered how artists communicate their viewpoints and their connection to the natural environment through their artwork. They created clay forms inspired by the artworks of Alison Brown and Aboriginal Thaynakwith artist, Thancoupie. They also identified and explored visual and symbolic aspects of their local coastline through structured visual inquiry to further develop their own ideas for their artwork.

Students reflected on the success and suitability of their choices and actions used to complete their final artworks. They recognised, and explained to an audience, how they used visual conventions to represent and share their experience of the coast.

Achievement standard

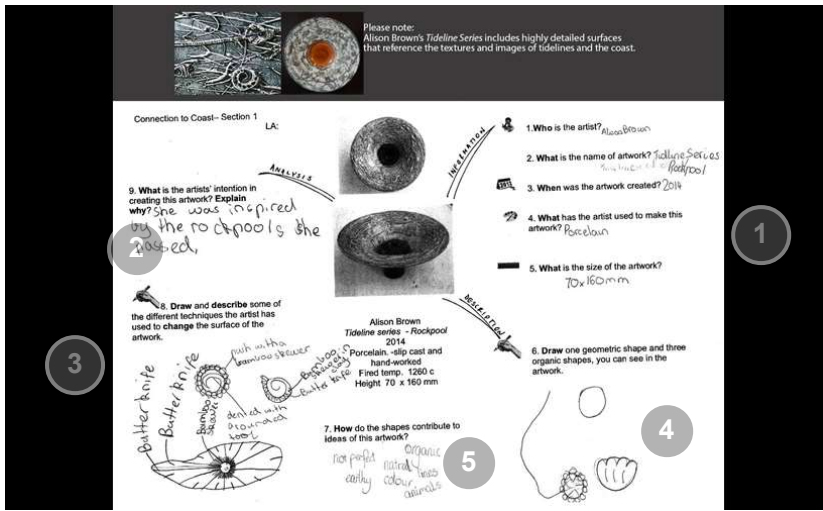
Subject

Learning Area

By the end of Year 4, students describe and discuss similarities and differences between artworks they make, present and view. They discuss how they and others use visual conventions in artworks.

Students collaborate to plan and make artworks that are inspired by artworks they experience. They use visual conventions, techniques and processes to communicate their ideas.

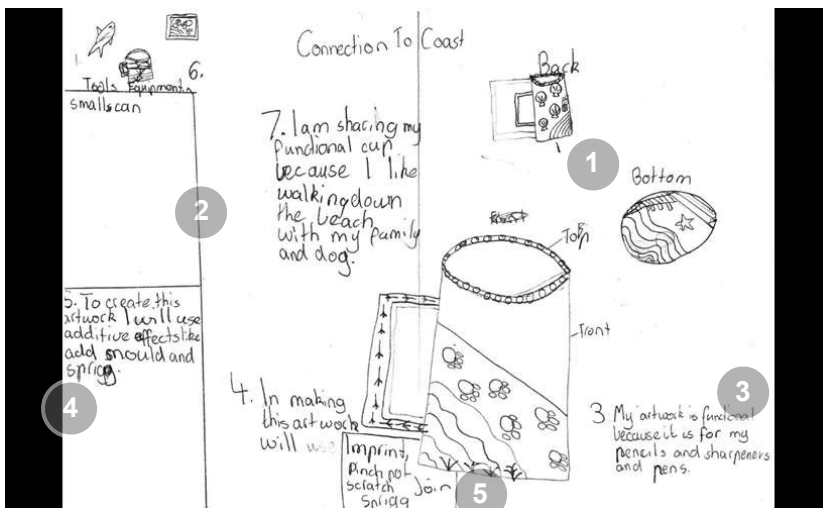
1 Art inquiry



Annotations

- 1 **Annotation 1**
Identifies the artist, the artwork's materials and its dimensions
- 2 **Annotation 2**
Describes the artist's inspiration
- 3 **Annotation 3**
Identifies three of the techniques used to create textures on porcelain artworks and draws representations of each
- 4 **Annotation 4**
Draws organic and geometric shapes from the artwork
- 5 **Annotation 5**
Describes some shapes and suggests how an idea can be attributed to a shape

2 Artwork design



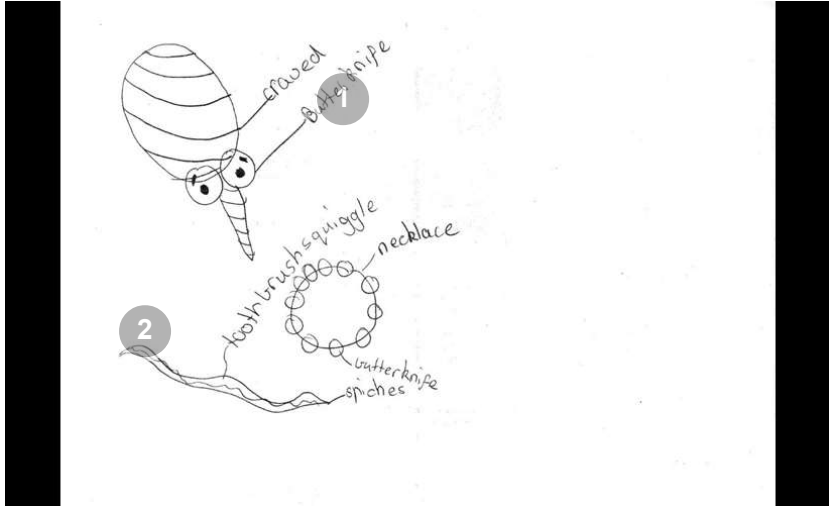
Annotations

- 1 **Annotation 1**
Draws a design for an artwork showing multiple views
- 2 **Annotation 2**
Explains the intent of the artwork
- 3 **Annotation 3**
Identifies the function of their artwork
- 4 **Annotation 4**
Identifies a tool

required to make the artwork

- 5 Annotation 5**
Identifies techniques to be used on the artwork

3 Observational drawings



Annotations

- 1 Annotation 1**
Identifies tools and techniques to use in clay artwork
- 2 Annotation 2**
Investigates line and shape in design drawings for clay artwork

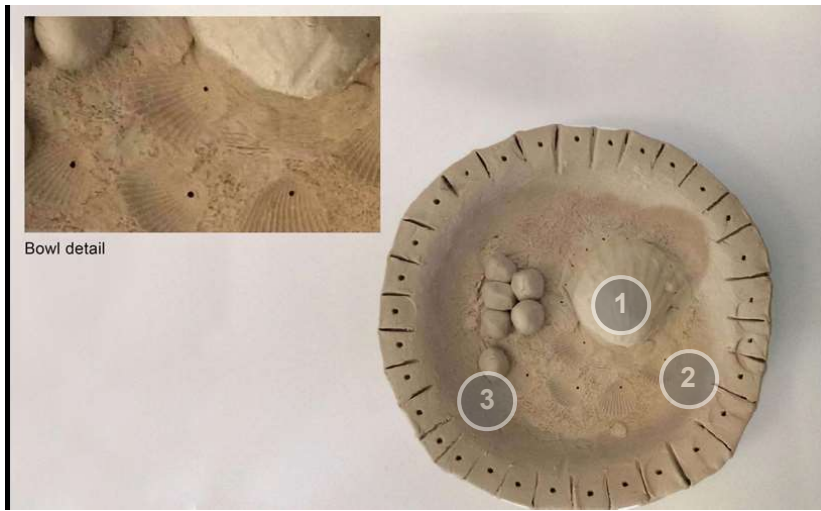
4 Shell sculptures



Annotations

- 1 Annotation 1**
Manipulates clay using the pinch pot technique to represent a shell

5 Bowl sculpture



Annotations

- 1 Annotation 1**
Uses shell pressings, holes and line direction and adds 'stones' and 'shell' to create texture and detail
- 2 Annotation 2**
Creates a clay shallow bowl with the intention of representing shells and spherical shapes inspired by the coast
- 3 Annotation 3**
Manipulates the medium of clay using the techniques of slab building and joining

6 Sculpture



Annotations

- 1 Annotation 1**
Uses shell pressings and draws lines on the sculpture to represent their experience of the coast
- 2 Annotation 2**
Creates a sculpture to realise their artistic intentions